

AUTOMATIC UPCUT MITER SAW Ø450 MM/ 18"

CRATER A-450



»» General Features

- Two-hands safety system
- Greater cutting range than other manufacturers
- 90° cut on the left
- Miter movement
- Cutting at intermediate degrees
- Saw blade rising speed is hydro-pneumatic adjustable
- Equipped double hand safety feature
- Cutting at standard angles and any intermediate angles
- Split type straight cut on left 90 angle



AUTOMATIC UPCUT MITER SAW Ø450 MM/ 18"

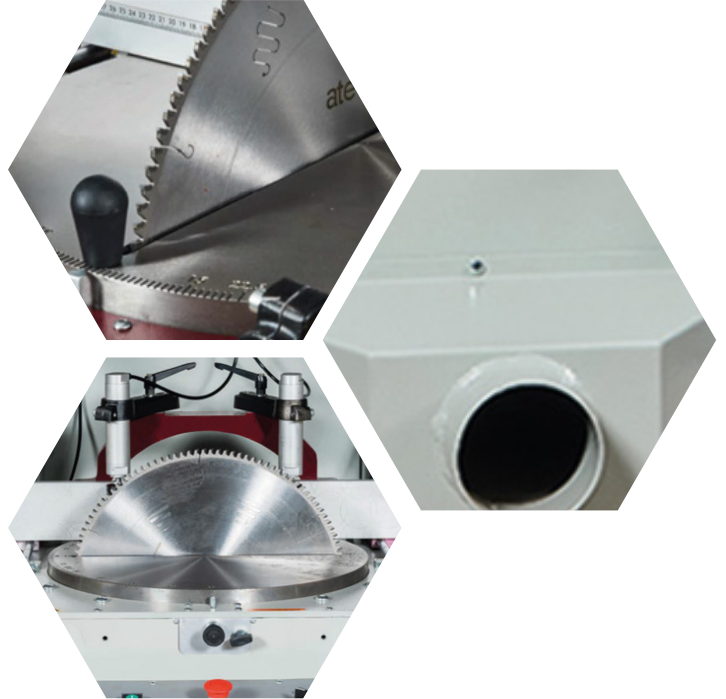
CRATER A-450

✓ Standard

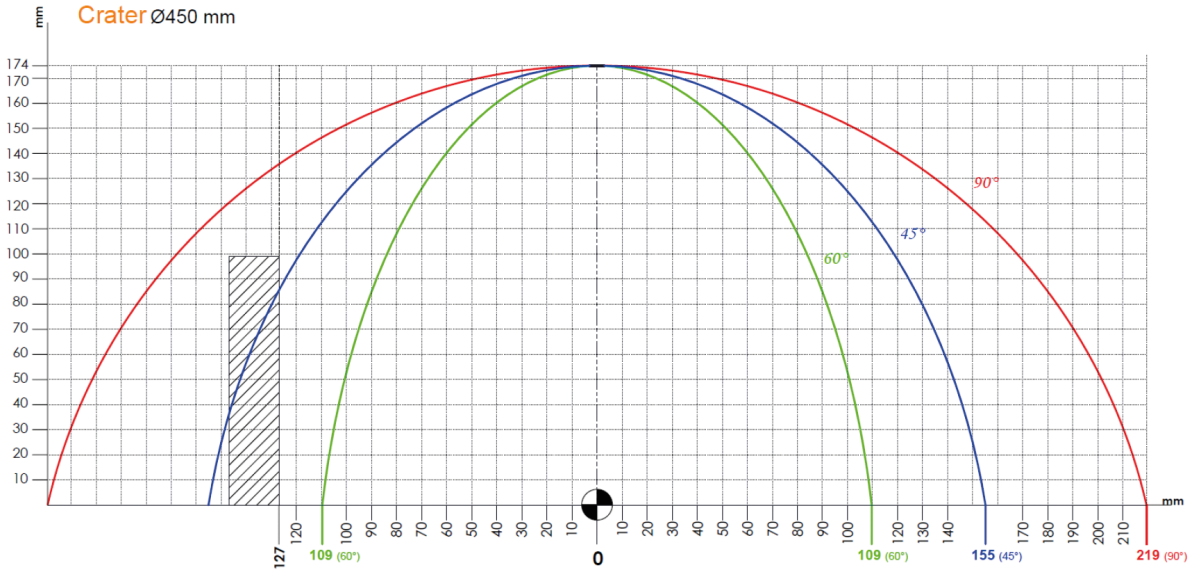
- 1 pc. 450 mm saw blade
- 2 pcs. vertical clamps
- Air blow gun
- Milling saw, tool holder and collets

○ Optional

- Conveyor
- Spray mist lubrication system
- Horizontal clamps
- Chip collector manifold
- Foot pedal control system
- Automatic Up Guard
- Monofaze Motor



» Cutting Diagram



» Technical Table

Cutting Motor	Saw Dimension	Saw	Bar	Air Cons.	Packing Size	Machine Size	Machine Kg
2.2 kW, 3 HP 400 V - 230 V - 50 / 60 Hz	D=450 mm d=30-32 mm	3000 r.p.m	6-8 Bar	20 lt/min	W x L x H (cm) 90x106x154cm	W x L x H (cm) 80x96x138cm	244