

MANUAL UPCUT MITER SAW Ø450MM/ 18"

CRATER M-450



»» General Features

- Practical and easy manual lifting
- Greater cutting range than other manufacturers
- 90° degree cut on the left
- Miter movement
- Cutting at intermediate degrees
- Cutting at standard angles and any intermediate angles
- Split type straight cut on left 90°



MANUAL UPCUT MITER SAW Ø450MM/ 18"

CRATER M-450

✓ Standard

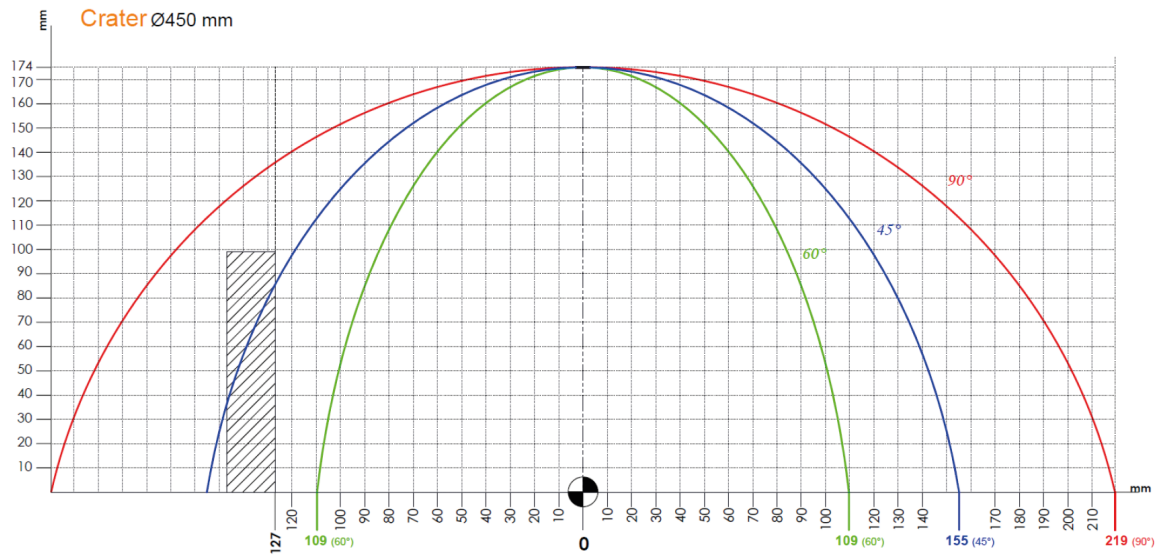
- 1 pc. 450 mm saw blade
- 2 pcs. Mechanic vertical clamps

○ Optional

- Conveyor
- Pneumatic clamps
- Spray mist lubrication system
- 1-Phase motor



» Cutting Diagram



» Technical Table

Cutting Motor	Saw Dimension	Saw	Packing Size	Machine Size	Machine Kg
2.2 kW, 3 HP 230V - 400V - 50 / 60 Hz	D= 450 mm d=30/32 mm	3000 r.p.m	W x L x H (cm) 88x96x154cm	W x L x H (cm) 80x94x138cm	228